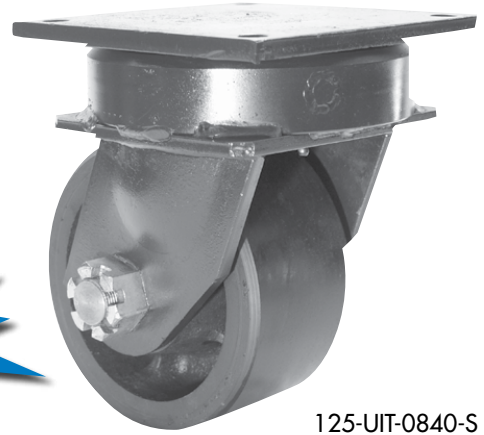


# 125 Series Casters

RWM's 125 Series features the patented Kingpinless™ design. This is the design that RWM patented, and that has proven itself to be the best solution for demanding applications. This is the caster design that all others are now copying because it is simply unmatched in extending service life, reducing all possible causes for caster failure. The 125 Series offers capacity up to 40,000 pounds. Typical applications include ground support equipment, die carts, and aircraft engine stands. Leg thickness of 1/2" adds extra strength and durability. All swivel sections are supplied with a lubrication fitting for field maintenance.



125-UIT-0840-S



## Features

**Raceway Design:** Patented Kingpinless™ single ball bearing precision machined raceway hardened to 53 Rockwell C Minimum, 7" diameter raceway with 3/4" diameter ball bearings

**Finish:** Laguna Blue paint

**Wheels:** Wheels are either 3", 4", 5" or 6" wide depending upon wheel size and type. Wheels have either a 3/4", 1", 1-1/4" or 1-1/2" roller bearing or 3/4", 1", 1-1/4" tapered wheel bearings. Roller bearing wheels rotate on a hardened and ground spanner, tapered wheel bearings rotate on the axle. All wheels are equipped with lubrication fittings.

**Mounting Plate Size:** 8-1/2" x 8-1/2" x 1/2"

**Bolt Hole Spacing:** 7" x 7"

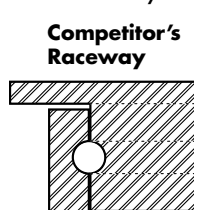
**Mounting Bolt Diameter:** 5/8"

## Applications

The 125 Series typical applications include dollies, utility carts, tow line and platform trucks. It is also ideal for: tow lines, shock load applications and abusive conditions, production line dollies & trucks used in various industries including but not limited to: boat & ship molding and building, automotive, aerospace, metal fabricating, metal forging, heavy machinery & equipment, military equipment, mobile homes, etc. Tractor pulled trailers, extreme duty platform trucks & material handling carts, air cargo & ground support equipment, storage tanks, gantries & heavy duty processing equipment, coliseum & gymnasium equipment, shipping/receiving carts, warehousing & freight terminal dollies and carts, and countless other heavy duty applications.

## The Majority of Competitor's Raceways

The inline positioning of the competition's raceway creates a direct "hammering" effect via the ball bearings which are centered on the tangent of the two raceways, thus savaging and eventually eroding the raceway. The inevitable result



is a loose fit and progressive swivel failure. The machining requirements of the competition to accommodate a swivel lock reduces strength, leading to premature fatigue, stress fractures of the raceway and eventual failure.

## Options

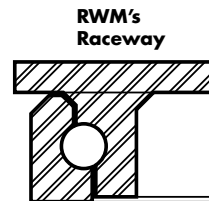
- DSL** Demountable Swivel Lock\*
- HDSL** Heavy Duty Demountable Swivel Lock
- FCWB** Face Contact Wheel Brake
- HT** High Temperature Lubrication
- LT** Low Temperature Lubrication
- NY** Notched Yoke
- PCWB** Poly Cam Wheel Brake
- SL** Swivel Lock
- SR** Sealed Swivel Raceway
- WS** Wheel Seals
- ZP** Zinc Plated

\*When ordering the Demountable Swivel Lock (DSL), you must also order the Notched Yoke (NY).

## RWM's Patented Offset Raceway - Why It's a Superior Design

Our patented offset precision-machined raceway exerts radial force evenly where there is full contact between the ball bearing and the raceway. RWM's unique design adds more mass at key points. This, plus more thorough heat treatment, provides additional strength and combats brinelling into the core material. The result:

- ◆ No direct "hammering" forces on the intersections of the raceways
- ◆ Vastly reduced raceway wear
- ◆ Elimination of the "pull apart" forces of stress in the swivel section
- ◆ Smoother swiveling action
- ◆ High maneuverability
- ◆ Longer service life
- ◆ Less maintenance
- ◆ Extra impact resistance
- ◆ High radial force absorption



### OPTIONAL MOUNTING PLATES

Optional Top Plate Number	Mounting Plate	Bolt Hole Spacing	Bolt Size
LLST/LLRT	8-1/2" x 11"	7" x 9-3/4"	5/8"

UP TO 40,000 POUND CAPACITY

SPECIFICATIONS								
Wheel Diameter	Wheel Width	Wheel Type	lbs. Capacity	Overall Height	Swivel Caster Model Number		Swivel Lead	Approx Weight lbs.
					Straight Roller Bearing	Tapered Roller Bearing		
8"	4"	Cast Iron	4000	11"	125-CIR-0840-S	125-CIT-0840-S	2-3/16"	70.0
		Forged Steel	10000		125-FSR-0840-S			86.0
		Forged Steel	20000			125-FST-0840-S		86.0
		Urethane on Iron	3500		125-UIR-0840-S	125-UIT-0840-S		62.0
		V-Grooved Forged	10000		125-VFR-0840-S			80.0
		V-Grooved Forged	15000			125-VFT-0840-S		80.0
10"	4"	Cast Iron	5000	13"	125-CIR-1040-S	125-CIT-1040-S	2-9/16"	90.0
		Forged Steel	10000		125-FSR-1040-S			100.0
		Forged Steel	20000			125-FST-1040-S		100.0
		Rubber On Iron	1400		125-RIR-1040-S	125-RIT-1040-S		72.0
		Ultra Thick Urethane	4500		125-UTR-1040-S	125-UTT-1040-S		62.0
		Urethane on Iron	4200		125-UIR-1040-S	125-UIT-1040-S		75.0
		V-Grooved Forged	10000		125-VFR-1040-S			92.0
		V-Grooved Forged	15000			125-VFT-1040-S		92.0
10"	5"	Cast Iron	6000	13"	125-CIR-1050-S	125-CIT-1050-S	2-9/16"	95.0
		Urethane on Iron	5000		125-UIR-1050-S	125-UIT-1050-S		80.0
11"	5"	Rubber On Iron	1760	14"	125-RIR-1150-S	125-RIT-1150-S	2-5/8"	85.0
		Urethane on Iron	5500		125-UIR-1150-S	125-UIT-1150-S		85.0
11"	6"	Cast Iron	10000	14"	125-CIR-1160-S	125-CIT-1160-S	2-3/4"	95.0
12"	4"	Rubber On Iron	1600	15-1/2"	125-RIR-1240-S	125-RIT-1240-S	3-3/8"	78.0
		Ultra Thick Urethane	5300		125-UTR-1240-S	125-UTT-1240-S		75.0
		Urethane on Iron	4800		125-UIR-1240-S	125-UIT-1240-S		78.0
12"	5"	Rubber On Iron	2050	15-1/2"	125-RIR-1250-S	125-RIT-1250-S	3-3/8"	90.0
		Ultra Thick Urethane	6500		125-UTR-1250-S	125-UTT-1250-S		78.0
		Urethane on Iron	6000		125-UIR-1250-S	125-UIT-1250-S		90.0
12"	6"	Cast Iron	10000	15-1/2"	125-CIR-1260-S	125-CIT-1260-S	3-3/8"	130.0
		Urethane on Iron	7500		125-UIR-1260-S	125-UIT-1260-S		95.0
14"	4"	Ultra Thick Urethane	6200	18"	125-UTR-1440-S	125-UTT-1440-S	3-11/16"	90.0
14"	5"	Ultra Thick Urethane	7600	18"	125-UTR-1450-S	125-UTT-1450-S	3-11/16"	85.0
14"	6"	Ultra Thick Urethane	9000	18"	125-UTR-1460-S	125-UTT-1460-S	3-11/16"	140.0
16"	4"	Rubber On Iron	2050	19"	125-RIR-1640-S	125-RIT-1640-S	3-9/16"	130.0
		Ultra Thick Urethane	7100		125-UTR-1640-S	125-UTT-1640-S		97.0
		Urethane on Iron	6000		125-UIR-1640-S	125-UIT-1640-S		130.0
16"	5"	Rubber On Iron	2570	19"	125-RIR-1650-S	125-RIT-1650-S	3-9/16"	140.0
		Ultra Thick Urethane	8800		125-UTR-1650-S	125-UTT-1650-S		130.0
		Urethane on Iron	8400		125-UIR-1650-S	125-UIT-1650-S		140.0
18"	5"	Rubber On Iron	2800	22"	125-RIR-1850-S	125-RIT-1850-S	4-1/4"	150.0
		Urethane on Iron	8600		125-UIR-1850-S	125-UIT-1850-S		138.0
20"	5"	Rubber On Iron	2900	23"	125-RIR-2050-S	125-RIT-2050-S	4-1/4"	155.0
		Urethane on Iron	9000		125-UIR-2050-S	125-UIT-2050-S		149.0

UP TO 40,000 POUND CAPACITY

To order a rigid caster, change the "S" to "R" in the model number. For example: "125-CIR-0840-R". To order rig only, omit the blue letters. For example: "125-0840-S". Dimensions shown are nominal. If precise dimensions are required, consult your RWM representative. For approximate weight of our rigid casters, deduct 12.5 pounds per item.