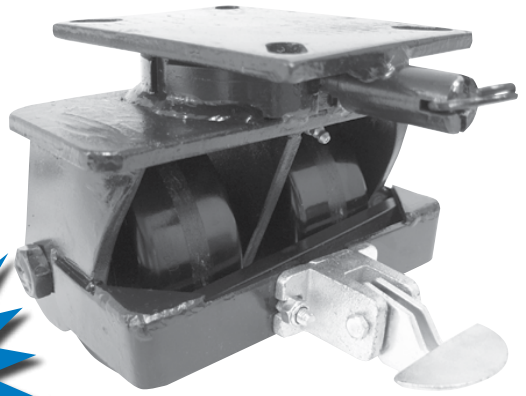


# 2-76 Series Casters

RWM's 2-76 Series Kingpinless™ Dual Wheel Casters feature all of the benefits of our patented Kingpinless™ raceway and twice the capacity load.



2-76-DUR-0625-S-SL-CWB

## Features

**Raceway Design:** Patented Kingpinless™ single ball bearing precision machined raceway hardened to 53 Rockwell C minimum. Swivel section features a 3" diameter raceway with 1/2" ball bearings. Notched yoke is standard.

**Axle:** 3/4" bolt with locking or slotted nut as required

**Finish:** Laguna Blue paint

**Wheels:** Wheels are available with either 1" roller bearings which rotate on hardened and ground spanner bushings or 3/4" tapered bearings that rotate on the axle. All wheels are equipped with a lubrication fitting.

**Mounting Plate Size:** 5-1/4" x 7-1/4" x 3/8"

**Bolt Hole Spacing:** 3-3/8" x 5-1/4", slotted to 4-1/8" x 6-1/8"

**Mounting Bolt Diameter:** 1/2"

**Leg Thickness:** 3/8"

View  
CAD Models  
On Our  
Website!

## Options

- CWB** Cam Wheel Brake
- DSL** Demountable Swivel Lock
- HT** High Temperature Lubrication
- LT** Low Temperature Lubrication
- SL** Swivel Lock
- SR** Sealed Swivel Raceway
- ZP** Zinc Plated

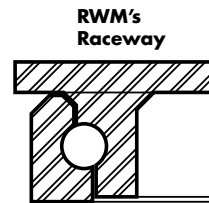
## Applications

Dual wheel casters offer high weight capacities with minimal overall heights, better load distribution, floor protection and mobility than single wheel casters. This is a result of spreading the weight over a wider floor area while offering wheel differential action, resulting in less friction between the wheels and the floor, requiring less effort for the caster to swivel. Dual wheel casters are ideal for tow lines, shock load applications and abusive conditions, production line dollies & trucks used in various industries including but not limited to boat & ship molding and building, automotive, aerospace, metal fabricating, metal forging, heavy machinery & equipment, military equipment, mobile homes, etc. tractor pulled trailers, extreme duty platform trucks & material handling carts, air cargo & ground support equipment, storage tanks, gantries & heavy duty processing equipment, coliseum & gymnasium equipment, shipping / receiving carts, warehousing & freight terminal dollies and carts, and other extra heavy duty applications.

## RWM's Patented Offset Raceway – Why It's a Superior Design

Our patented offset precision-machined raceway exerts radial force evenly where there is full contact between the ball bearing and the raceway. RWM's unique design adds more mass at key points. This, plus more thorough heat treatment, provides additional strength and combats brinelling into the core material. The result:

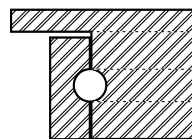
- ◆ No direct "hammering" forces on the intersections of the raceways
- ◆ Vastly reduced raceway wear
- ◆ Elimination of the "pull apart" forces of stress in the swivel section
- ◆ Smoother swiveling action
- ◆ High maneuverability
- ◆ Longer service life
- ◆ Less maintenance
- ◆ Extra impact resistance
- ◆ High radial force absorption



## The Majority of Competitor's Raceways

The inline positioning of the competition's raceway (as opposed to the offset positioning utilized by RWM) creates a direct "hammering" effect via the ball bearings which are centered on the tangent of the two raceways, thus savaging and eventually eroding the raceway. The inevitable result is a loose fit and progressive swivel failure. Even a double raceway configuration is subject to these same "hammering" hazards.

Competitor's Raceway



The machining requirements of the competition to accommodate a swivel lock reduces strength, leading to premature fatigue, stress fractures of the raceway and eventual failure.

## OPTIONAL MOUNTING PLATES

Optional Top Plate Number	Mounting Plate	Bolt Hole Spacing	Bolt Size
90ST* 90RT	6" x 7"	4-5/8" x 5-1/2" slotted to 4-3/8" x 5-5/8"	1/2"
95ST* 95RT	6" x 7-1/2"	4-1/2" x 6" slotted to 4-1/8" x 6-1/8"	1/2"
75ST** 75RT**	4-1/2" x 6-1/2"	2-7/16" x 4-15/16" slotted to 3-3/8" x 5-1/4"	1/2"

\* Add 1/8" to caster overall height when using this top plate.

\*\* Deduct 1/16" from caster overall height when using this top plate.

UP TO 7,000 POUND CAPACITY

## SPECIFICATIONS

Wheel Diameter	Wheel Width	Wheel Type	lbs. Capacity	Overall Height	Swivel Caster Model Number			Swivel Lead	Approx Weight
					Straight Roller Bearing	Ball Bearing	Tapered Roller Bearing		
6"	2-1/2"	Cast Iron	3600	8-1/16"	2-76-CIR-0625-S	2-76- <b>GTB</b> -0625-S	2-76-CIT-0625-S	37.0	
		Durastan	3200		2-76-DUR-0625-S		21.7		
		GT	4600		2-76-RIR-0625-S-EHT		21.0		
		Rubber on Iron-EHT	2160		2-76- <b>UIR</b> -0625-S		2-76-RIT-0625-S-EHT	36.5	
		Urethane on Iron	3240		2-76-RIR-0625-S		2-76- <b>UIT</b> -0625-S	39.5	
		Rubber on Iron	1080					36.5	
6"	3"	Cast Iron	6000	8-1/16"	2-76-CIR-0630-S	2-76- <b>NYB</b> -0630-S	2-76-CIT-0630-S	39.0	
		Durastan	4000		2-76-DUR-0630-S		24.0		
		Nylatron HD	5200		2-75-RIR-0630-S-EHT		2-76-RIT-0630-S-EHT	22.0	
		Rubber on Iron-EHT	2720		2-76- <b>UIR</b> -0630-S		2-76- <b>UIT</b> -0630-S	33.0	
		Urethane on Iron	4000		2-76-MUR-0630-S		2-76-MUB-0630-S	33.0	
		Solid Urethane	4000		2-76-RIR-0630-S			24.0	
		Rubber on Iron	1360					33.0	
8"	2-1/2"	Cast Iron	4000	10-1/2"	2-76-CIR-0825-S	2-76- <b>GTB</b> -0825-S	2-76-CIT-0825-S	52.0	
		Durastan	4000		2-76-DUR-0825-S		29.0		
		GT	4800		2-76-RIR-0825-S-EHT		2-76-RIT-0825-S-EHT	28.0	
		Rubber on Iron-EHT	2680		2-76- <b>UIR</b> -0825-S		2-76- <b>UIT</b> -0825-S	41.5	
		Urethane on Iron	3600		2-76-RIR-0825-S			48.5	
		Rubber on Iron	1340					41.5	
8"	3"	Cast Iron	6000	10-1/2"	2-76-CIR-0830-S	2-76- <b>NYB</b> -0830-S	2-76-CIT-0830-S	49.0	
		Durastan	5000		2-76-DUR-0830-S		28.0		
		Nylatron HD	7000		2-76-RIR-0830-S-EHT		2-76-RIT-0830-S-EHT	29.0	
		Rubber on Iron-EHT	3360		2-76- <b>UIR</b> -0830-S		2-76- <b>UIT</b> -0830-S	52.0	
		Urethane on Iron	5000		2-76-MUR-0830-S		2-76-MUB-0830-S	52.0	
		Solid Urethane	5000		2-76-RIR-0830-S			28.0	
		Rubber on Iron	1680					52.0	
10"	2-1/2"	Cast Iron	5000	12-1/2"	2-76-CIR-1025-S		2-76-CIT-1025-S	63.5	
		Durastan	5000		2-76-DUR-1025-S		30.5		
		Rubber on Iron-EHT	3460		2-76-RIR-1025-S-EHT		2-76-RIT-1025-S-EHT	47.5	
		Urethane on Iron	4740		2-76- <b>UIR</b> -1025-S		2-76- <b>UIT</b> -1025-S	58.5	
		Rubber on Iron	1580		2-76-RIR-1025-S		2-76-RIT-1025-S	47.5	
10"	3"	Durastan	5800	12-1/2"	2-76-DUR-1030-S	2-76- <b>GTB</b> -1030-S		31.0	
		GT	6800		2-76-RAB-1030-S-EHT		2-76-RAT-1030-S-EHT	31.0	
		Rubber on Aluminum-EHT	4000		2-76-RIR-1030-S-EHT		2-76-RIT-1030-S-EHT	61.0	
		Rubber on Iron-EHT	4000		2-76-MUR-1030-S		2-76-MUB-1030-S	61.0	
		Solid Urethane	6000		2-76- <b>UTR</b> -1030-S		2-76- <b>UTT</b> -1030-S	31.0	
		Ultra Thick Urethane	6800		2-76- <b>UIR</b> -1030-S		2-76- <b>UIT</b> -1030-S	64.0	
		Urethane on Iron	6000		2-76-RIR-1030-S		2-76-RIT-1030-S	61.0	
		Rubber on Iron	2000					61.0	
12"	2-1/2"	Durastan	6000	15-1/2"	2-76-DUR-1225-S			44.5	
		Rubber on Iron	1800		2-76-RIR-1225-S		2-76-RIT-1225-S	55.5	
		Urethane on Iron	5400		2-76- <b>UIR</b> -1225-S		2-76- <b>UIT</b> -1225-S	76.2	
12"	3"	Cast Iron	7000	15-1/2"	2-76-CIR-1230-S	2-76- <b>RAB</b> -1230-S-EHT	2-76-CIT-1230-S	88.0	
		Durastan	7000		2-76-DUR-1230-S		34.0		
		Rubber on Aluminum-EHT	4560		2-76-RIR-1230-S-EHT		2-76-RAT-1230-S-EHT	88.0	
		Rubber on Iron-EHT	4560		2-76- <b>UTR</b> -1230-S		2-76- <b>UTT</b> -1230-S	88.0	
		Ultra Thick Urethane	7000		2-76- <b>UIR</b> -1230-S		2-76- <b>UIT</b> -1230-S	101.0	
		Urethane on Iron	6800		2-76-RIR-1230-S		2-76-RIT-1230-S	88.0	
		Rubber on Iron	2280					88.0	

UP TO 7,000 POUND CAPACITY

To order a rigid caster, change the "S" to "R" in the model number. For example: "2-76-CIR-0630-R". To order rig only, omit the blue letters. For example: "2-76-0630-S". Dimensions shown are nominal. If precise dimensions are required, consult your RWM representative. For approximate weight of our rigid casters, deduct 5.4 pounds per item.