

# 75 Series Casters

**RAPIDSTOCK**

RWM's 75 Series caster features the patented Kingpinless™ design. The 75 Series is recommended for the most demanding applications and is available with up to 3" wheels for higher capacity applications. All swivel sections are supplied with a lubrication fitting for field maintenance. The 75 series is case hardened to provide long service. It will not crack like through hardened or induction hardened construction provided by other caster manufacturers.



75-DUR-1030-S

## Features

**Raceway Design:** Patented Kingpinless™ single ball bearing precision machined raceway hardened to 53 Rockwell C minimum. Swivel section features 3" diameter raceway with 1/2" ball bearings. The notched raceway is standard.

**Leg Thickness:** 5/16" formed steel

**Axle:** 3/4" bolt with lock or slotted nut as required

**Finish:** Laguna Blue paint

**Wheels:** Wheels are available with either a 1" roller bearing which rotates on a hardened and ground spanner bushing or 3/4" tapered bearings that rotate on the axle. All wheels are equipped with a lubrication fitting.

**Mounting Plate Size:** 4-1/2" x 6-1/2" x 5/16"

**Bolt Hole Spacing:** 2-7/16" x 4-15/16", slotted to 3-3/8" x 5-1/4"

**Mounting Bolt Diameter:** 1/2"

View  
CAD Models  
On Our  
Website!

## Options

- CWB** Cam Wheel Brake
- DSL** Demountable Swivel Lock
- HT** High Temperature Lubrication
- LT** Low Temperature Lubrication
- PCWB** Poly Cam Wheel Brake
- SL** Swivel Lock
- SR** Sealed Swivel Raceway
- ZP** Zinc Plated
- FICWB** Field Installable Cam Wheel Brake

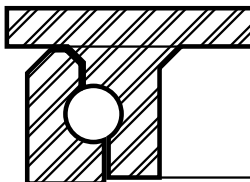
## Applications

The 75 Series typical applications include dollies, utility carts, tow line and platform trucks. It is also ideal for: tow lines, shock load applications and abusive conditions, production line dollies & trucks used in various industries including but not limited to: boat & ship molding and building, automotive, aerospace, metal fabricating, metal forging, heavy machinery & equipment, military equipment, mobile homes, etc. tractor pulled trailers, extreme duty platform trucks & material handling carts, air cargo & ground support equipment, storage tanks, gantries & heavy duty processing equipment, coliseum & gymnasium equipment, shipping/receiving carts, warehousing & freight terminal dollies and carts, heavy duty power towed application seen in tire manufacturing and countless other heavy duty applications.

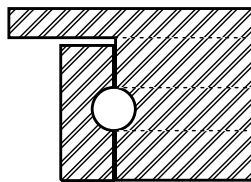
## RWM's Patented Offset Raceway – Why It's a Superior Design

Our patented offset precision-machined raceway exerts radial force evenly where there is full contact between the ball bearing and the raceway. RWM's unique design adds more mass at key points. This, plus more thorough heat treatment, provides additional strength and combats brinelling into the core material.

**RWM's Raceway**



**Competitor's Raceway**



\*Subtract 1/16" OAH when using this top plate

\*\* Add 1/16" OAH when using this top plate

\*\*\* Add 3/16" OAH when using this top plate

### OPTIONAL MOUNTING PLATES

Optional Top Plate Number	Mounting Plate	Bolt Hole Spacing	Bolt Size
90ST*** 90RT	6" x 7"	4-5/8" x 5-1/2" slotted to 4-3/8" x 5-5/8"	1/2"
43ST* 43RT	5" x 5-1/2"	4-1/8" x 4-1/2"	3/8"
76ST** 76RT	5-1/4" x 7-1/4"	3-3/8" x 5-1/4" slotted to 4-1/8" x 6-1/8"	1/2"

To order a rigid caster, change the "S" to "R" in the model number. For example: "75-CIR-1030-R". To order a rig only, omit the blue letters. For example: "75-1030-S". Dimensions shown are nominal. If precise dimensions are required, consult your RWM representative. For approximate weight of our rigid caster, deduct 3.9 pounds.

UP TO 6,000 POUND CAPACITY

## SPECIFICATIONS

Wheel Diameter	Wheel Width	Wheel Type	Capacity lbs.	Overall Height	Swivel Caster Model Number			Swivel Lead	Approx Weight lbs.	
					Straight Roller Bearing	Ball Bearing	Tapered Roller Bearing			
5"	2-1/2"	Cast Iron	2000	6-1/2"	75-CIR-0525-S		75-CIT-0525-S	1-1/8"	18.0	
6"	2-1/2"	Cast Iron	1800	7-1/2"	75-CIR-0625-S		75-CIT-0625-S	1-5/16"	17.0	
		Durastan	1600		75-DUR-0625-S		75-FST-0625-S		11.5	
		Forged Steel	5000		75-FSR-0625-S		75-FST-0625-S		20.5	
		GT	2300			75-GTB-0625-S			11.5	
		Rubber on Iron	540		75-RIR-0625-S				16.5	
		Urethane on Iron	1620		75-UIR-0625-S		75-UIT-0625-S		16.5	
		V-Groove Iron	2500		75-VIR-0625-S		75-VIT-0625-S		16.5	
		Rubber on Iron -EHT	810		75-RIR-0625-S-EHT		75-RIT-0625-S-EHT		16.5	
6"	3"	Cast Iron	3000	7-1/2"	75-CIR-0630-S		75-CIT-0630-S	1-5/16"	18.5	
		Durastan	2000		75-DUR-0630-S		75-FST-0630-S		12.5	
		Forged Steel	6000		75-FSR-0630-S		75-FST-0630-S		31.0	
		Nylatron HD	2600			75-NYB-0630-S			12.5	
		Rubber on Iron-EHT	1020		75-RIR-0630-S-EHT		75-RIT-0630-S-EHT		17.5	
		Urethane on Iron	2000		75-UIR-0630-S		75-UIT-0630-S		17.5	
		V-Groove Forged	6000		75-VFR-0630-S		75-VFT-0630-S		30.0	
		Rubber on Iron	680		75-RIR-0630-S				17.5	
8"	2-1/2"	Cast Iron	2000	10-1/8"	75-CIR-0825-S		75-CIT-0825-S	2"	23.0	
		Durastan	2000		75-DUR-0825-S		75-FST-0825-S		15.0	
		Forged Steel	4500		75-FSR-0825-S		75-FST-0825-S		25.5	
		GT	2400			75-GTB-0825-S			15.0	
		Rubber on Iron-EHT	1005		75-RIR-0825-S-EHT		75-RIT-0825-S-EHT		18.5	
		Urethane on Iron	1800		75-UIR-0825-S		75-UIT-0825-S		18.5	
		V-Groove Iron	3000		75-VIR-0825-S		75-VIT-0825-S		27.0	
		Rubber on Iron	670		75-RIR-0825-S				18.5	
8"	3"	Cast Iron	2500	10-1/8"	75-CIR-0830-S		75-CIT-0830-S	2"	26.0	
		Durastan	2500		75-DUR-0830-S		75-FST-0830-S		16.5	
		Forged Steel	5500		75-FSR-0830-S		75-FST-0830-S		26.0	
		Infinity	4000			75-UIB-0830-S-INF			20.0	
		Nylatron HD	6000			75-NYB-0830-S			16.0	
		Rubber on Iron-EHT	1260		75-RIR-0830-S-EHT		75-RIT-0830-S-EHT		19.5	
		Omega	1600		75-UOR-0830-S		75-UOT-0830-S		19.0	
		Urethane on Iron	2500		75-UIR-0830-S		75-UIT-0830-S		19.5	
		V-Groove Forged	6000		75-VFR-0830-S		75-VFT-0830-S		36.0	
		V-Groove Iron	5000		75-VIR-0830-S		75-VIT-0830-S		26.0	
Rubber on Iron	840	75-RIR-0830-S			19.5					
10"	2-1/2"	Cast Iron	3000	11-1/2"	75-CIR-1025-S		75-CIT-1025-S	2-3/16"	25.5	
		Durastan	2500		75-DUR-1025-S				16.5	
		Rubber on Iron-EHT	1185		75-RIR-1025-S-EHT		75-RIT-1025-S-EHT		21.5	
		Urethane on Iron	2370		75-UIR-1025-S		75-UIT-1025-S		21.5	
		Rubber on Iron	790		75-RIR-1025-S		75-RIT-1025-S		21.5	
10"	3"	Cast Iron	4000	11-1/2"	75-CIR-1030-S		75-CIT-1030-S	2-3/16"	23.0	
		Durastan	2900		75-DUR-1030-S		75-FST-1030-S		20.0	
		Forged Steel	6000		75-FSR-1030-S		75-FST-1030-S		41.0	
		GT	3400			75-GTB-1030-S			20.0	
		Infinity	5000			75-UIB-1030-S-INF			23.0	
		Nylatron HD	6000			75-NYB-1030-S			21.0	
		Omega	2000		75-UOR-1030-S		75-UOB-1030-S		20.0	
		Rubber on Aluminum-EHT	1500			75-RAB-1030-S-EHT			75-RAT-1030-S	20.3
		Rubber on Iron-EHT	1500		75-RIR-1030-S-EHT		75-RIT-1030-S-EHT		22.5	
		Urethane on Iron	3000		75-UIR-1030-S		75-UIT-1030-S		22.5	
		Ultra Thick Urethane	3400		75-UTR-1030-S		75-UTT-1030-S		25.0	
		V-Groove Forged	6000		75-VFR-1030-S		75-VFT-1030-S		48.0	
		V-Groove Iron	5000		75-VIR-1030-S		75-VIT-1030-S		23.0	
Rubber on Iron	1000	75-RIR-1030-S		75-RIT-1030-S	22.5					
12"	2-1/2"	Durastan	3000	13-1/2"	75-DUR-1225-S			2-5/8"	20.5	
		Rubber on Iron	900		75-RIR-1225-S		75-RIT-1225-S		23.5	
		Urethane on Iron	2700		75-UIR-1225-S		75-UIT-1225-S		23.5	
12"	3"	Cast Iron	5000	13-1/2"	75-CIR-1230-S		75-CIT-1230-S	2-5/8"	32.0	
		Durastan	3500		75-DUR-1230-S				22.5	
		Rubber on Aluminum-EHT	1710			75-RAB-1230-S-EHT			75-RAT-1230-S	24.5
		Rubber on Iron-EHT	1710		75-RIR-1230-S-EHT		75-RIT-1230-S-EHT		26.5	
		Urethane on Iron	3400		75-UIR-1230-S		75-UIT-1230-S		26.5	
		Ultra Thick Urethane	4100		75-UTR-1230-S		75-UTT-1230-S		28.0	
		V-Groove Iron	6000		75-VIR-1230-S		75-VIT-1230-S		43.0	
		Rubber on Iron	1140		75-RIR-1230-S		75-RIT-1230-S		26.5	

UP TO 6,000 POUND CAPACITY