

# 76 Series Casters

**RAPIDSTOCK**

RWM's 76 Series caster features the patented Kingpinless™ design. This is the design that RWM patented, and that has proven itself to be the best solution for demanding applications. This is the caster design that all others are now copying because it is simply unmatched in extending service life, reducing all possible causes for caster failure. The 76 Series offers up to 7000 lb. capacity and is available with a wide variety of wheels. All swivel sections are supplied with a lubrication fitting for field maintenance. The 76 series is case hardened for long service life. It will not crack like through hardened or induction hardened construction provided by other caster manufacturers.



76-DUR-0830-S

View  
CAD Models  
On Our  
Website!

## Features

**Raceway Design:** Patented Kingpinless™ single ball bearing precision machined raceway hardened to 53 Rockwell C minimum. Swivel section features 3" diameter raceway with 1/2" ball bearings. The notched raceway is standard.

**Leg Thickness:** 3/8"

**Axle:** 3/4" bolt with lock or slotted nut as required

**Finish:** Laguna Blue paint

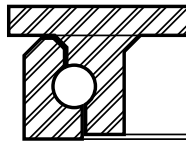
**Wheels:** Wheels are available with either a 1" roller bearing which rotates on a hardened and ground spanner bushing or 3/4" tapered bearings that rotate on the axle. All wheels are equipped with a lubrication fitting.

**Mounting Plate Size:** 5-1/4" x 7-1/4" x 3/8"

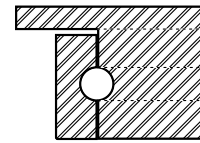
**Bolt Hole Spacing:** 3-3/8" x 5-1/4", slotted to 4-1/8" x 6-1/8"

**Mounting Bolt Diameter:** 1/2"

RWM's  
Raceway



Competitor's  
Raceway



## Options

- CWB** Cam Wheel Brake
- DSL** Demountable Swivel Lock
- HT** High Temperature Lubrication
- LT** Low Temperature Lubrication
- PCWB** Poly Cam Wheel Brake
- SL** Swivel Lock
- SR** Sealed Swivel Raceway
- ZP** Zinc Plated
- FICWB** Field Installable Cam Wheel Brake

## Applications

The 76 Series typical applications include dollies, utility carts, tow line and platform trucks. It is also ideal for: tow lines, shock load applications and abusive conditions, production line dollies & trucks used in various industries including but not limited to: boat & ship molding and building, automotive, aerospace, metal fabricating, metal forging, heavy machinery & equipment, military equipment, mobile homes, etc. Tractor pulled trailers, extreme duty platform trucks & material handling carts, air cargo & ground support equipment, storage tanks, gantries & heavy duty processing equipment, coliseum & gymnasium equipment, shipping/receiving carts, warehousing & freight terminal dollies and carts, and countless other heavy duty applications. This caster is the mainstay in tire manufacturing.

### OPTIONAL MOUNTING PLATES

Optional Top Plate Number	Mounting Plate	Bolt Hole Spacing	Bolt Size
90ST* 90RT	6" x 7"	4-5/8" x 5-1/2" slotted to 4-3/8" x 5-5/8"	1/2"
95ST* 95RT	6" x 7-1/2"	4-1/2" x 6" slotted to 4-1/8" x 6-1/8"	1/2"
75ST** 75RT	4-1/2" x 6-1/2"	2-7/16" x 4-15/16" slotted to 3-3/8" x 5-1/4"	1/2"

\* Add 1/8" OAH when using this top plate

\*\* Subtract 1/16" OAH when using this top plate



UP TO 7,000 POUND CAPACITY

## SPECIFICATIONS

Wheel Diameter	Wheel Width	Wheel Type	lbs. Capacity	Overall Height	Swivel Caster Model Number			Swivel Lead	lbs. Approx Weight				
					Straight Roller Bearing	Ball Bearing	Tapered Roller Bearing						
5"	2-1/2"	Cast Iron	2000	7"	76-CIR-0525-S		76-CIT-0525-S	2"	18.0				
		Cast Iron	1800		76-CIR-0625-S		76-CIT-0625-S		17.0				
6"	2-1/2"	Durastan	1600	8"	76-DUR-0625-S			2-1/4"	11.5				
		Forged Steel	5000		76-FSR-0625-S		76-FST-0625-S		20.5				
		GT	2300			76-GTB-0625-S			11.5				
		Rubber on Iron-EHT	810		76-RIR-0625-S-EHT		76-RIT-0625-S-EHT		16.5				
		Urethane on Iron	1620		76-UIR-0625-S		76-UIT-0625-S		16.5				
		V-Groove Iron	2500		76-VIR-0625-S		76-VIT-0625-S		16.5				
		Rubber on Iron	670		76-RIR-0625-S				16.5				
		Cast Iron	3000		8"	76-CIR-0630-S			76-CIT-0630-S	2-1/4"	18.5		
		Durastan	2000			76-DUR-0630-S					12.5		
Forged Steel	7000	76-FSR-0630-S		76-FST-0630-S		31.0							
Nylatron HD	2600		76-NYB-0630-S			12.5							
Rubber on Iron-EHT	1020	76-RIR-0630-S-EHT		76-RIT-0630-S-EHT		17.5							
Urethane on Iron	2000	76-UIR-0630-S		76-UIT-0630-S		17.5							
V-Groove Forged	7000	76-VFR-0630-S		76-VFT-0630-S		30.0							
Rubber on Iron	680	76-RIR-0825-S				17.5							
8"	2-1/2"	Cast Iron	2000	10-1/2"		76-CIR-0825-S		76-CIT-0825-S	2-15/16"		23.0		
		Durastan	2000		76-DUR-0825-S			15.0					
		Forged Steel	4500		76-FSR-0825-S		76-FST-0825-S	25.5					
		GT	2400			76-GTB-0825-S		15.0					
		Rubber on Iron-EHT	1005		76-RIR-0825-S-EHT		76-RIT-0825-S-EHT	18.5					
		Urethane on Iron	2000		76-UIR-0825-S		76-UIT-0825-S	18.5					
		V-Groove Iron	3000		76-VIR-0825-S		76-VIT-0825-S	27.0					
		Rubber on Iron	670		76-RIR-0825-S			18.5					
		8"	3"		Cast Iron	3000	10-1/2"	76-CIR-0830-S			76-CIT-0830-S	2-15/16"	26.0
Durastan	2500			76-DUR-0830-S				16.5					
Forged Steel	5500			76-FSR-0830-S		76-FST-0830-S		26.0					
Infinity	4000				76-UIB-0830-S-INF			20.0					
Nylatron HD	7000				76-NYB-0830-S			16.0					
Omega	1600			76-UOR-0830-S	76-UOB-0830-S	76-UOT-0830-S		19.0					
Rubber on Iron-EHT	1260			76-RIR-0830-S-EHT		76-RIT-0830-S-EHT		19.5					
Urethane on Iron	2500			76-UIR-0830-S		76-UIT-0830-S		19.5					
V-Groove	5000			76-VIR-0830-S		76-VIT-0830-S		26.0					
V-Groove Forged	6000			76-VFR-0830-S		76-VFT-0830-S		36.0					
Rubber on Iron	840			76-RIR-0830-S				19.5					
10"	2-1/2"			Cast Iron	2500	12-1/2"		76-CIR-1025-S		76-CIT-1025-S	3-3/8"		25.5
				Durastan	2500			76-DUR-1025-S					16.5
		Rubber on Iron-EHT	1185	76-RIR-1025-S-EHT			76-RIT-1025-S-EHT	21.5					
		Urethane on Iron	2370	76-UIR-1025-S			76-UIT-1025-S	21.5					
		Rubber on Iron	790	76-RIR-1025-S			76-RIT-1025-S	21.5					
		10"	3"	Cast Iron	4000		12-1/2"	76-CIR-1030-S		76-CIT-1030-S		3-3/8"	23.0
Durastan	2900			76-DUR-1030-S				20.0					
Forged Steel	6000			76-FSR-1030-S		76-FST-1030-S		41.0					
GT	3400				76-GTB-1030-S			20.0					
Infinity	5000				76-UIB-1030-S			23.0					
Nylatron HD	7000				76-NYB-1030-S			21.0					
Omega	2000			76-UOR-1030-S	76-UOB-1030-S	76-UOT-1030-S		22.0					
Rubber on Aluminum-EHT	1500				76-RAB-1030-S-EHT	76-RAT-1030-S-EHT		20.3					
Rubber on Iron-EHT	1500			76-RIR-1030-S-EHT		76-RIT-1030-S-EHT		22.5					
Urethane on Iron	3000			76-UIR-1030-S		76-UIT-1030-S		22.5					
Ultra Thick Urethane	3400			76-UTR-1030-S		76-UTT-1030-S		26.0					
V-Groove Forged	6000			76-VFR-1030-S		76-VFT-1030-S		48.0					
V-Groove Iron	5000			76-VIR-1030-S		76-VIT-1030-S		23.0					
Rubber on Iron	1000			76-RIR-1025-S		76-RIT-1025-S		22.5					
12"	2-1/2"			Durastan	3000	15-1/2"		76-DUR-1225-S			4-5/16"		20.5
				Rubber on Iron	900			76-RIR-1225-S		76-RIT-1225-S			23.5
				Urethane on Iron	2700			76-UIR-1225-S		76-UIT-1225-S			23.5
12"	3"	Cast Iron	5000	15-1/2"	76-CIR-1230-S		76-CIT-1230-S	4-5/16"	32.0				
		Durastan	3500		76-DUR-1230-S				22.5				
		Rubber on Aluminum-EHT	1710			76-RAB-1230-S-EHT	76-RAT-1230-S-EHT		24.5				
		Rubber on Iron-EHT	1710		76-RIR-1230-S-EHT		76-RIT-1230-S-EHT		26.5				
		Urethane on Iron	3400		76-UIR-1230-S		76-UIT-1230-S		26.5				
		Ultra Thick Urethane	4100		76-UTR-1230-S		76-UTT-1230-S		29.0				
		V-Groove Iron	6000		76-VIR-1230-S		76-VIT-1230-S		43.0				
		Rubber on Iron	1140		76-RIR-1030-S		76-RIT-1030-S		26.5				

UP TO 7,000 POUND CAPACITY

To order a rigid caster, change the "S" to "R" in the model number. For example: "76-CIR-1230-R". To order a rig only, omit the blue letters. For example: "76-1230-S". Dimensions shown are nominal. If precise dimensions are required, consult your RWM representative. For approximate weight of our rigid casters, deduct 3.9 pounds.