

RWM's CargoMax™ is the strongest, most durable air cargo caster on the market. The CargoMax™ caster features an optional demountable foot guard built specifically for use on sorting decks. The foot guard prevents foot entry into the caster mounting hole on decks and assists in providing a safer, more productive working environment on sortation decks.

Features

Precision Ball Bearing: All wheels and swivel raceways have precision ball bearings for better load distribution, strength in side thrust application, and ease of mobility.

Dust Shield, Water Guard & Thread Guard: Prevents wheel and swivel assembly from becoming contaminated

Capacity: 500 lbs.

Finish: Zinc plated to protect against corrosion

Benefits

CargoMax™ can take the heaviest blows from all types of cargo containers with the highest rated impact resistance in the air cargo industry, even under the most extreme conditions. It outshines the competition in endurance with exclusive features such as three sealed precision bearings, high strength thread and dust guards, high-strength polymer wheels and a rivet-protecting water shield.



26-USB-2713-S-TG

26-USB-2713-S-TG-FG

Available with optional foot guard

Options

FG Foot Guard

Economy Inverted Cargo Casters

This caster has been optimally designed for air cargo and conveyor applications. It features a heat-treated, hardened raceway for added durability and offers a 300 pound capacity. The light weight phenolic wheel offers high impact resistance, ease of rollability and resistance to moisture and chemicals. This caster includes a dust cap and thread guards.

Features

Raceway Design: Hardened

Dust Shield, Water Guard & Thread Guard: Prevents wheel and swivel assembly from becoming contaminated

Capacity: True 300 lbs.

Finish:

DUB = Zinc plated to protect against corrosion

NYB = Type II Gold zinc plated to protect against corrosion



26-DUB-0312-S-TG-LD

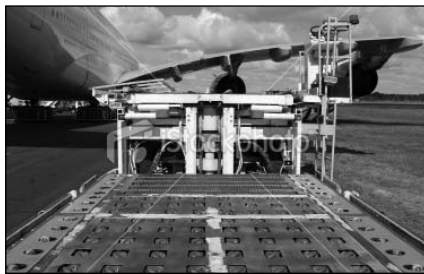
26-NYB-0312-S-TG-LD

Applications

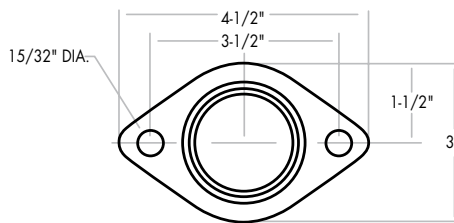
Ideal for airline and aerospace industry, light duty cargo handling, textile industry, conveyor applications, freight handling and cargo conveyor equipment.

UP TO 500 POUND CAPACITY

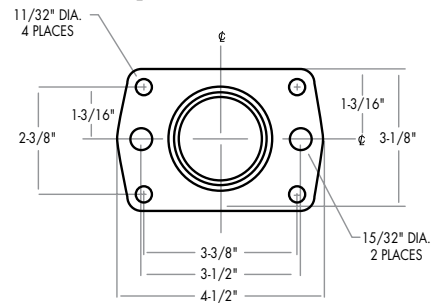
SPECIFICATIONS								
Wheel Diameter	Wheel Width	Wheel Type	Capacity lbs.	Overall Height	Ball Bearing	Swivel Lead	Approx. Weight	
2-5/16"	1-5/16"	Hytrek	500	3-25/32"	26-USB-2313-S-TG	1"	1.62	
					26-USB-2313-S6-TG		1.62	
					26-USB-2313-S-TG-FG		2.46	
					26-USB-2313-S6-TG-FG		2.46	
2-3/4"	1-5/16"	Hytrek	500	4"	26-USB-2713-S-TG	1"	1.705	
					26-USB-2713-S6-TG		1.705	
					26-USB-2713-S-TG-FG		2.54	
					26-USB-2713-S6-TG-FG		2.54	



Standard Top Plate (S)



Optional Rectangular Top Plate (S6)

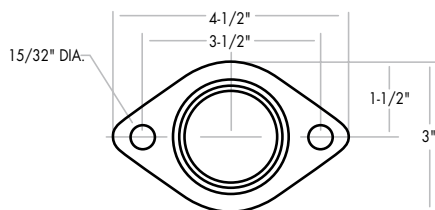


Economy Inverted Cargo Casters

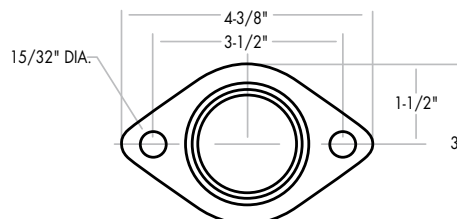
Light Duty Casters

SPECIFICATIONS									
Wheel Diameter	Wheel Width	Wheel Type	DBL	Axle Diameter	Capacity lbs.	Overall Height	Ball Bearing	Swivel Lead	Approx. Weight
3"	1-1/4"	Phenolic	1-5/8"	5/16"	300	4"	26-DUB-0312-S-TG-LD	1"	1.0
3"	1-1/4"	Nylon	1-5/8"	3/8"	300	4"	26-NYB-0312-S-TG-LD	1-1/4"	1.38

Standard Top Plate for 26-DUB-0312-S-TG-LD



Standard Top Plate for 26-NYB-0312-S-TG-LD



UP TO 500 POUND CAPACITY