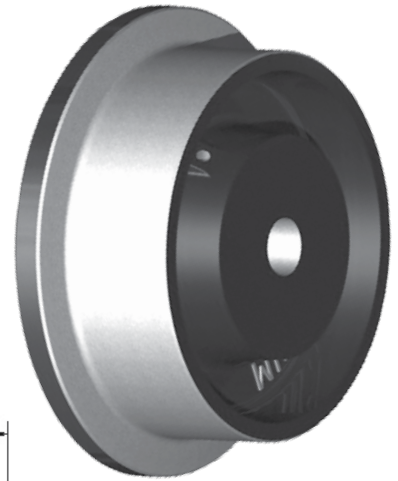


Forged Steel Flanged Wheels

RWM Forged Steel industrial track wheels are designed with the most gruesome of applications in mind. Designed to optimize production flow by running on tracks instead of the production floor itself, preventing damage to your floors and aiding in rollability. Drop forged and capable of handling the largest loads, these wheels are the best solution to move the heaviest of projects.



FFR-0840-16-S

Features

Temperature Range: -50° to +800°F

Finish: Painted

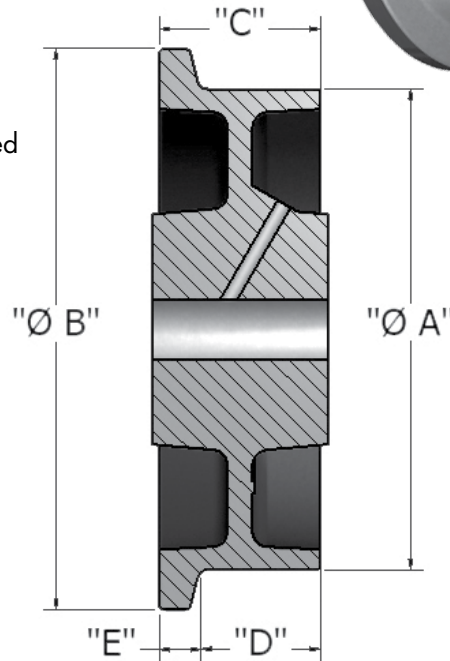
Bores: Special sizes available upon request

Keyways: Can be installed on most sizes

SINGLE FLANGE: "S" after bearing #

DUAL FLANGE: "D" after bearing #

HUB LENGTH: includes spanner & roller bearings installed



Options

TG Thread Guard

WS Wheel Seals

CONTACT RWM FOR MORE OPTIONS.

DUAL FLANGE SPECIFICATIONS

Wheel Diameter A	Flanged Diameter B	Wheel Width C	Tread Face D	Flange E	Capacity lbs.	Axle Diameter	Straight Roller Bearing	Tapered Roller Bearing	Hub Length	Approx Weight lbs.
6"	7"	3"	2"	1/2"	10000	3/4"	FFR-0630-12-D	FFT-0630-12-D	3-9/16"	18
						1"	FFR-0630-16-D	FFT-0630-16-D		
						1-1/4"	FFR-0630-20-D	FFT-0630-20-D		
						1-1/2"	FFR-0630-24-D	FFT-0630-24-D		
8"	9"	3"	2"	1/2"	12000	3/4"	FFR-0830-12-D	FFT-0830-12-D	3-9/16"	21
						1"	FFR-0830-16-D	FFT-0830-16-D		
						1-1/4"	FFR-0830-20-D	FFT-0830-20-D		
						1-1/2"	FFR-0830-24-D	FFT-0830-24-D		
8"	10"	4"	2-1/2"	3/4"	20000	1"	FFR-0840-16-D	FFT-0840-16-D	4-9/16"	33
						1-1/4"	FFR-0840-20-D	FFT-0840-20-D		
						1-1/2"	FFR-0840-24-D	FFT-0840-24-D		
10"	12"	3"	2"	1/2"	15000	3/4"	FFR-1030-12-D	FFT-1030-12-D	3-9/16"	30
						1"	FFR-1030-16-D	FFT-1030-16-D		
						1-1/4"	FFR-1030-20-D	FFT-1030-20-D		
						1-1/2"	FFR-1030-24-D	FFT-1030-24-D		
10"	12"	4"	2-1/2"	3/4"	20000	1"	FFR-1040-16-D	FFT-1040-16-D	4-9/16"	42
						1-1/4"	FFR-1040-20-D	FFT-1040-20-D		
						1-1/2"	FFR-1040-24-D	FFT-1040-24-D		

UP TO 20,000 POUND CAPACITY

SINGLE FLANGE SPECIFICATIONS

Wheel Diameter A	Flanged Diameter B	Wheel Width C	Tread Face D	Flange E	Capacity lbs.	Axle Diameter	Stright Roller Bearing	Tapered Roller Bearing	Plain Bearing	Hub Length	Approx Weight lbs.
5"	6"	2"	1-1/2"	1/2"	3000	1/2"	FFR-0520-08-S	FFT-0520-08-S	FFP-0520-08-S	2-7/16"	8
						5/8"	FFR-0520-10-S	FFT-0520-10-S	FFP-0520-10-S		
					5000	3/4"	FFR-0520-12-S	FFT-0520-12-S	FFP-0520-12-S		
						1"	FFR-0520-16-S	FFT-0520-16-S			
					1-1/4"	FFR-0520-20-S	FFT-0520-20-S				
6"	7"	2"	1-1/2"	1/2"	4000	1/2"	FFR-0620-08-S	FFT-0620-08-S	FFP-0620-08-S	2-7/16"	10
						5/8"	FFR-0620-10-S	FFT-0620-10-S	FFP-0620-10-S		
					8000	3/4"	FFR-0620-12-S	FFT-0620-12-S	FFP-0620-12-S		
						1"	FFR-0620-16-S	FFT-0620-16-S			
					1-1/4"	FFR-0620-20-S	FFT-0620-20-S				
6"	7"	3"	2-1/4"	3/4"	10000	3/4"	FFR-0630-12-S	FFT-0630-12-S		3-9/16"	16
						1"	FFR-0630-16-S	FFT-0630-16-S			
						1-1/4"	FFR-0630-20-S	FFT-0630-20-S			
						1-1/2"	FFR-0630-24-S	FFT-0630-24-S			
8"	9"	3"	2-1/4"	3/4"	12000	3/4"	FFR-0830-12-S	FFT-0830-12-S		3-9/16"	19
						1"	FFR-0830-16-S	FFT-0830-16-S			
						1-1/4"	FFR-0830-20-S	FFT-0830-20-S			
						1-1/2"	FFR-0830-24-S	FFT-0830-24-S			
8"	10"	4"	3"	1"	20000	1"	FFR-0840-16-S	FFT-0840-16-S		4-9/16"	31
						1-1/4"	FFR-0840-20-S	FFT-0840-20-S			
						1-1/2"	FFR-0840-24-S	FFT-0840-24-S			
10"	12"	3"	2-1/4"	3/4"	15000	3/4"	FFR-1030-12-S	FFT-1030-12-S		3-9/16"	27
						1"	FFR-1030-16-S	FFT-1030-16-S			
						1-1/4"	FFR-1030-20-S	FFT-1030-20-S			
						1-1/2"	FFR-1030-24-S	FFT-1030-24-S			
10"	12"	4"	3"	1"	20000	1"	FFR-1040-16-S	FFT-1040-16-S		4-9/16"	39
						1-1/4"	FFR-1040-20-S	FFT-1040-20-S			
						1-1/2"	FFR-1040-24-S	FFT-1040-24-S			

UP TO 20,000 POUND CAPACITY