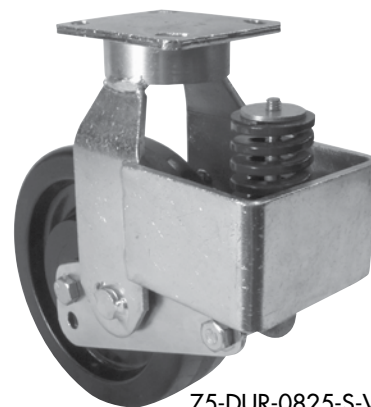


SA Series Casters

RWM's SA Series Casters:

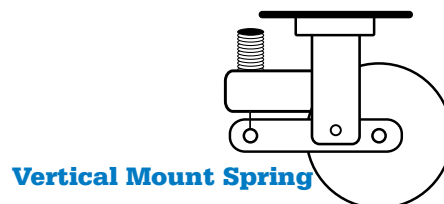
- Reduce stress on wheels and rigs due to shock from rough surfaces
- Dampen and isolate shocks and vibration from rough surfaces to protect cargo or contents in a cart or equipment
- Reduce noise caused by casters traveling over rough surfaces
- Equalize the load over uneven terrain among four or more casters, thereby reducing overloads on casters and twisting of the cart/frame



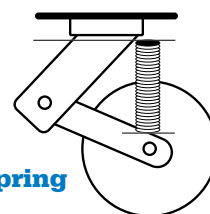
75-DUR-0825-S-VMS-500

Applications

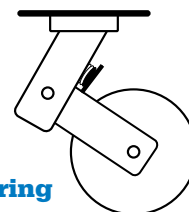
RWM's Shock Absorbing Casters feature either vertical mount springs, outside mount springs or inside mount springs. These are unique casters that were designed for specific applications and industries requiring a cushioned ride for protection from shock and vibration (spring loaded). These industrial casters are ideal for diagnostic and electrical equipment, institutional and laboratory equipment and stands, medical equipment and carts, mobile workstations, computer main frames and towers, point of purchase displays and shelving, food processing equipment, packaging equipment, sound and lighting equipment, ground support equipment, assembly line dollies, mobile storage racks and many other light to heavy duty applications. The Shock Absorbing Casters load ratings vary from 100 to 18,000 pounds.



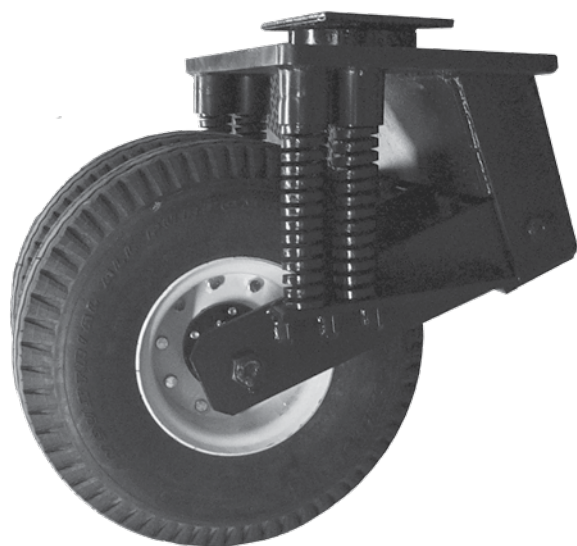
Vertical Mount Spring



Outside Mount Spring



Inside Mount Spring



2-125-FNT-2575-S-SA-OMS-STLL-FF-3,000#

Options

- CWB** Cam Wheel Brake
- DSL** Demountable Swivel Lock*
- HDSL** Heavy-Duty Threaded Swivel Lock
- NY** Notched Yoke Base
- PCWB** Poly Cam Wheel Brake
- SL** Swivel Lock
- SR** Sealed Swivel Raceway
- ZP** Zinc Plated

*When ordering the Demountable Swivel Lock (DSL), also order the Notched Yoke (NY).

Contact factory for pricing, specialty top plates or applications.

* Half deflection at specified overall height and caster load rating.

** When placing an order, add the capacity to the end of the model number. Example: 65-DUR-0820-S-VMS-1000

‡ Often called working height. Add 1/2 of total deflection range to obtain height at no load. Example: 75-DUR-0825-S-VMS-500.

11" overall height plus 5/8" equals 11-5/8" height at no load. All dimensions are nominal. Contact RWM representative for exact information.

 Wheel Diameter	 Wheel Width	 Wheel Type	Swivel Series	 Overall Height @1/2 Deflection	 Swivel Lead	 Swivel Radius	 Deflection Range*	 Caster Load Rating Availability (Min-Max)**	 Approx Weight	Swivel Caster Model Number**
VMS SA CASTER										
6"	2"	Phenolic	44	8-1/8"	1-3/4"	4-3/4"	7/8"	200-800	9.0	44-DUR-0620-S-VMS
		Rubber/Iron					1"	200-400	11.0	44-RIR-0620-S-VMS
		Urethane					1"	200-800	11.1	44-UIR-0620-S-VMS
8"	2"	Phenolic	44	10"	2-1/8"	6-1/8"	15/16"	200-1000	10.0	44-DUR-0820-S-VMS
		Rubber/Iron					1"	200-500	12.0	44-RIR-0820-S-VMS
		Urethane					1"	200-1000	12.0	44-UIR-0820-S-VMS
8"	2"	Phenolic	65	11"	2-1/8"	6-1/8"	1-1/4"	500-1000-1400	12.0	65-DUR-0820-S-VMS
		Rubber/Iron			2-1/4"	6-1/2"		500	13.0	65-RIR-0820-S-VMS
		Urethane			2-1/4"	6-1/2"		500-1000-1500	13.0	65-UIR-0820-S-VMS
8"	2-1/2"	Phenolic	75	11"	2-1/4"	6-1/2"	1-1/4"	500-1000-1500	13.5	75-DUR-0825-S-VMS
		Rubber/Iron						500-670	15.0	75-RIR-0825-S-VMS
		Urethane						500-1000-1500	15.0	75-UIR-0825-S-VMS
8"	2-1/2"	Phenolic	2-75	11"	2"	7-1/8"	1-1/4"	1000-2000-3000	27.0	2-75-DUR-0825-S-VMS
		Rubber/Iron			2-1/4"			1000-1340	30.0	2-75-RIR-0825-S-VMS
		Urethane			2-1/4"			1000-2000-3000	30.0	2-75-UIR-0825-S-VMS
10"	2-1/2"	Phenolic	75	13"	2-3/4"	8"	1-1/4"	500-1000-1050	15.0	75-DUR-1025-S-VMS
		Rubber/Iron						500-790	20.0	75-RIR-1025-S-VMS
		Urethane						500-1000-1500	20.0	75-UIR-1025-S-VMS
10"	2-1/2"	Phenolic	2-75	13"	2-3/4"	8"	1-1/4"	1000-2000-3000	30.0	2-75-DUR-1025-S-VMS
		Rubber/Iron						1000-1500	40.0	2-75-RIR-1025-S-VMS
		Urethane						1000-2000-3000	40.0	2-75-UIR-1025-S-VMS
10"	3"	Phenolic	2-75	13"	2-3/4"	8-5/8"	1-1/4"	1000-2000-3000	38.0	2-75-DUR-1030-S-VMS
		Rubber/Iron						1000-2000	48.0	2-75-RIR-1030-S-VMS
		Urethane						1000-2000-3000	48.0	2-75-UIR-1030-S-VMS
OMS SA CASTER										
12"	4"	Urethane	2-125	21"	5-1/2"	12-3/4"	2-1/2"	4800-9600	290.0	2-125-UIT-1240-S-OMS
		Urethane Thick						4800-9600	290.0	2-125-UTI-1240-S-OMS
12"	5"	Urethane	125	21"	5-1/2"	12"	2-1/2"	3250-6000	100.0	125-UIT-1250-S-OMS
		Urethane Thick						3250-6500	180.0	125-UIT-1650-S-OMS
16"	5"	Urethane	125	23"	5-1/2"	14"	2-1/2"	3250-6500	180.0	125-UIT-1650-S-OMS
		Urethane Thick						6500-13000	400.0	2-125-UIT-1650-S-OMS
16"	5"	Urethane	2-125	23"	5-1/2"	15"	2-1/2"	6500-13000	400.0	2-125-UIT-1650-S-OMS
		Urethane Thick						6500-13000	400.0	2-125-UIT-1650-S-OMS
18"	5"	Urethane	2-125	25"	5-1/2"	16"	2-1/4"	8000-16000	570.0	2-125-UIT-1850-S-OMS
20"	5"	Urethane Iron	2-125	25-5/8"	5-7/8"	18-5/8"	1-1/2"	10000-18000	925.0	2-125-UIT-2050-S-OMS
IMS SA CASTER										
4"	2"	Phenolic	65	7-1/4"	2"	4-1/8"	1-1/16"	100-200-250	10.0	65-DUR-0420-S-IMS
		Rubber/Iron						100-200-250	10.0	65-RIR-0420-S-IMS
		Urethane						100-200-250	10.0	65-UIR-0420-S-IMS
4"	2-1/2"	Urethane	65	7-1/4"	2"	4-1/4"	1-1/16"	100-200-250	10.0	65-UIB-0425-S-IMS
8"	2-1/2"	Phenolic	75	11"	4-1/2"	8-3/4"	1-1/2"	500-1000-1500-2000	13.5	75-DUR-0825-S-IMS
		Rubber/Iron						670	15.0	75-RIR-0825-S-IMS
		Urethane						1000-1500-2000	20.0	75-UIR-0825-S-IMS
8"	3"	Phenolic	75	11"	4-1/2"	8-3/4"	1-1/2"	1000-1500-2000	15.0	75-DUR-0830-S-IMS
		Rubber/Iron						840	17.0	75-RIR-0830-S-IMS
		Urethane						1000-1500-2000	27.0	75-UIT-0830-S-IMS
		Urethane Thick						1000-1500-2000	17.0	75-UTR-0830-S-IMS
8"	3"	Phenolic	2-85	11-1/2"	4-1/2"	9-3/8"	1-1/2"	2000-3000	35.0	2-85-DUR-0830-S-IMS
		Rubber/Iron						1680	45.0	2-85-RIR-0830-S-IMS
		Urethane						2000-3000	45.0	2-85-UIT-0830-S-IMS
		Urethane Thick						2000-3000	45.0	2-85-UTT-0830-S-IMS
10"	2-1/2"	Phenolic	75	13"	4-1/2"	9-3/4"	1-1/2"	1100-1650-2200	15.0	75-DUR-1025-S-IMS
		Rubber/Iron						790	20.0	75-RIR-1025-S-IMS
		Urethane						1100-1650-2200	49.0	75-UIR-1025-S-IMS
10"	3"	Phenolic	75	13"	4-1/2"	9-3/4"	1"	1100-1650-2200	18.0	75-DUR-1030-S-IMS
		Rubber/Iron						1000	40.0	75-RIR-1030-S-IMS
		Urethane						1100-1650-2200	23.0	75-UIT-1030-S-IMS
		Urethane Thick						1100-1650-2200	23.0	75-UTT-1030-S-IMS
10"	3"	Phenolic	2-85	13-1/2"	4-1/2"	10-1/4"	1-1/2"	2200-3300-4400	42.0	2-85-DUR-1030-S-IMS
		Rubber/Iron						2000	52.0	2-85-RIR-1030-S-IMS
		Urethane						2200-3300-4400	52.0	2-85-UIT-1030-S-IMS
		Urethane Thick						2200-3300-4400	52.0	2-85-UTT-1030-S-IMS
10"	5"	Urethane	125	15-1/2"	4-1/2"	10"	1-3/4"	2200-3300	80.0	125-UIT-1050-S-IMS
12"	3"	Phenolic	75	16"	5-1/2"	11-3/4"	1-3/4"	1100-2200-3300	26.0	75-DUR-1230-S-IMS
		Rubber/Iron						1100	31.0	75-RIR-1230-S-IMS
		Urethane						1100-2200-3300	47.0	75-UIT-1230-S-IMS
		Urethane Thick						1100-2200-3300	53.0	75-UTT-1230-S-IMS
12"	3"	Phenolic	2-85	16-1/2"	5-1/2"	12-1/4"	1"	2200-4400-6600	60.0	2-85-DUR-1230-S-IMS
		Rubber/Iron						2200	65.0	2-85-RIR-1230-S-IMS
		Urethane						2200-4400-6600	102.0	2-85-UIT-1230-S-IMS
		Urethane Thick						2200-4400-6600	116.0	2-85-UTT-1230-S-IMS
12"	5"	Urethane	125	16-1/2"	5-1/2"	12"	2"	2200-3300	290.0	125-UIT-1250-S-IMS

UP TO 18,000 POUND CAPACITY