

Urethane on Polypropylene Wheels

RAPIDSTOCK

Polyurethane is mechanically bonded to a high density polypropylene core. This mechanical bond eliminates bond separation due to wet conditions. The combination of both materials provides for a long lasting, longwearing wheel that is impervious to water (including salt water), resistant to oils, grease, most solvents and chemicals. The UP wheel provides a smooth ride over rough surfaces.

Features

Wheel Bearing: Choice of straight roller, ball or celcon

Temperature Range: -40° to +175°F

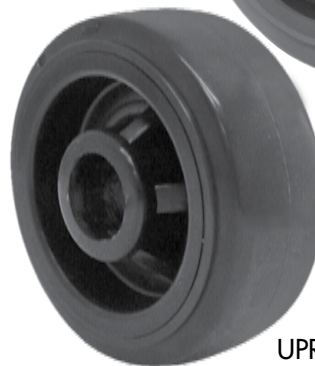
Hardness: 95 durometer Shore A

Applications

Urethane on Polypropylene Wheels are very popular, attractive, lightweight and extremely durable wheels used in countless applications. These polyurethane wheels are typically used in commercial, industrial and food service applications. The polyurethane tread is non-marking and offers a quiet ride, floor protection and excellent capacity ratings. These polyurethane wheels have a slight crown so that they maneuver very well. They are used in large numbers in the retail industry, shopping carts, platform trucks, etc. and can be washed down offering excellent sanitary applications.



UPR-0820-19



UPR-0520-19

Options

TG Thread Guard*

WS Wheel Seals

ZF Zerk Fitting

*Thread guards are available on some models. Consult factory for specific wheel sizes.

Urethane Solid Wheels

RAPIDSTOCK

RWM Urethane Solid wheels are designed primarily for applications involving high moisture. Injection molded hytel urethane, the urethane solid wheels provide extended service in moisture applications that normally destroy conventionally bonded urethane wheels. The standard durometer of RWM urethane solid wheels is 75 on the Shore D scale.

Applications

The RWM Urethane Solid Wheels are ideal for:

- ◆ high moisture applications

Features

Wheel Bearing: Choice of straight roller, ball, or celcon

Temperature Range: -30° to +190°F

Hub Lengths: Can be shortened or lengthened to order



USB-0515-06

Options

TG Thread Guard*

WS Wheel Seals (RB)

UP TO 1,400 POUND CAPACITY

Urethane on Polypropylene Wheels

SPECIFICATIONS								
Wheel Diameter	Wheel Width	lbs. Capacity	Axle Diameter	Straight Roller Bearing	Ball Bearing	Plain, Oilite, Celcon Bearing	Hub Length	Approx Weight
3"	1-1/4"	225	5/16" 3/8"		UPB-0312-05 UPB-0312-06	UPC-0312-05 UPC-0312-06	1-1/2"	0.5
3-1/2"	1-1/4"	250	5/16" 3/8"		UPB-3512-05 UPB-3512-06	UPC-3512-05 UPC-3512-06	1-1/2"	0.6
4"	1-1/4"	275	5/16" 3/8"		UPB-0412-05 UPB-0412-06	UPC-0412-05 UPC-0412-06	1-1/2"	0.7
4"	1-1/2"	500	1/2"	UPR-0415-08	UPB-0415-08	UPC-0415-08	1-7/8"	1.2
			5/8"	UPR-0415-10		UPC-0415-10		
			3/4"	UPR-0415-12		UPC-0415-12		
4"	2"	600	1/2"	UPR-0420-08	UPB-0420-08	UPC-0420-08	2-7/16"	1.4
			5/8"	UPR-0420-10		UPC-0420-10		
			3/4"	UPR-0420-12		UPC-0420-12		
5"	1-1/4"	300	5/16" 3/8"		UPB-0512-05 UPB-0512-06	UPC-0512-05 UPC-0512-06	1-1/2"	1.3
5"	1-1/2"	700	1/2"	UPR-0515-08	UPB-0515-08	UPC-0515-08	1-7/8"	1.4
			5/8"	UPR-0515-10		UPC-0515-10		
			3/4"	UPR-0515-12		UPC-0515-12		
5"	2"	750	1/2"	UPR-0520-08	UPB-0520-08	UPC-0520-08	2-7/16"	1.7
			5/8"	UPR-0520-10		UPC-0520-10		
			3/4"	UPR-0520-12		UPC-0520-12		
6"	1-1/2"	800	1/2"	UPR-0615-08	UPB-0615-08	UPC-0615-08	1-7/8"	2.3
			5/8"	UPR-0615-10		UPC-0615-10		
			3/4"	UPR-0615-12		UPC-0615-12		
6"	2"	900	1/2"	UPR-0620-08	UPB-0620-08	UPC-0620-08	2-7/16"	4.1
			5/8"	UPR-0620-10		UPC-0620-10		
			3/4"	UPR-0620-12		UPC-0620-12		
8"	2"	1000	1/2"	UPR-0820-08	UPB-0820-08	UPC-0820-08	2-7/16"	3.2
			5/8"	UPR-0820-10		UPC-0820-10		
			3/4"	UPR-0820-12		UPC-0820-12		

Urethane Solid Wheels

UP TO 1,400 POUND CAPACITY

SPECIFICATIONS								
Wheel Diameter	Wheel Width	lbs. Capacity	Axle Diameter	Straight Roller Bearing	Ball Bearing	Plain, Oilite, Celcon Bearing	Hub Length	Approx Weight
2"	7/8"	125	5/16"		USB-0208-05		1-1/2"	0.2
2-5/16"	1-5/16"	500	5/16"		USB-2313-05		1-5/8"	0.4
2-1/2"	1-1/4"	150	5/16"		USB-2512-05		1-1/2"	0.3
2-3/4"	1-5/16"	500	5/16"		USB-2713-05		1-5/8"	0.5
3"	1-1/4"	190	5/16"		USB-0312-05		1-1/2"	0.7
3-1/2"	1-5/16"	210	3/8"		USB-3512-06		1-1/2"	0.8
4"	1-1/4"	220	5/16"		USB-0412-05		1-1/2"	0.9
			3/8"	USR-0415-06	USB-0415-06	USC-0415-06	1-7/8"	1.5
	1/2"	USR-0415-08		USC-0415-08				
	5/8"	USR-0415-10		USC-0415-10				
3/4"	USR-0415-12		USC-0415-12					
5"	1-1/2"	330	3/8"	USR-0515-06	USB-0515-06	USC-0515-06	1-7/8"	1.6
			1/2"	USR-0515-08		USC-0515-08		
			5/8"	USR-0515-10		USC-0515-10		
			3/4"	USR-0515-12		USC-0515-12		