

Whisper Wheels HD Urethane on Iron

RAPIDSTOCK

The Whisper Wheel is a unique design in which one inch of urethane is molded to a specially machined cast iron core. The core is uniquely machined and the urethane is then mechanically and chemically bonded to the core. This unique design provides you with a wheel that is longer wearing than standard urethane wheel designs, resists lateral delamination of the tread and reduces noise and provides a quiet ride. Our Premium **PTMEG** urethane provides longer service life, better wear and tear characteristics and rejects floor debris.

Features

Wheel Bearing: Choice of straight roller bearing, tapered or ball bearings

Temperature Range: -40°F to 180°F

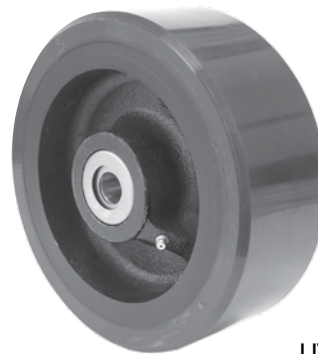
Hardness: 92 Durometer Shore A

Bores: Sizes can be altered

Keyways: Can be installed on most sizes

Applications

- ◆ automotive plants and towline applications
- ◆ applications needing lower noise levels, improved floor protection and where heavy loads and continuous use cause standard poly wheels to heat up and degrade



UWT-0830-12

Options

- 70D** Optional Durometer
- 80A** Optional Durometer
- 90A** Optional Durometer
- TG** Thread Guard on 2" wheels
- WS** Wheel Seals
- ZF** Zerk Fittings

Solid Urethane Wheels

RAPIDSTOCK

The RWM Solid Urethane Wheels offer quiet operation and rollability. This non-marking wheel is resistant to grease, oil, chemicals and moisture. In addition, it is also resistant to chunking, cutting and abrasive wear.



MUB-0820-40-MM

Features

Wheel Bearing: Choice of straight roller, celcon and ball bearings

Temperature Range: -40° to +180°F

Hub Length: Can be shortened or lengthened to order

Hardness: MU wheel is 70 durometer Shore D

Applications

- ◆ automotive plants and towline applications
- ◆ applications needing lower noise levels
- ◆ applications needing improved floor protection
- ◆ applications where heavy loads and continuous use cause standard poly wheels to heat up and degrade

MU - High Performance Solid Urethane Wheel - color black

Options

- TG** Thread Guard on 2" wheels
- WS** Wheel Seals

The solid urethane wheels can be used for the following series of rigs to make durable, long-lasting casters: 46, 47, 48, 52, 65, 70, 75 and 76 Series.



UP TO 4,100 POUND CAPACITY

SPECIFICATIONS										
Wheel Diameter	Wheel Width	Urethane Thickness	Capacity		Axle Diameter	Straight Roller Bearing	Ball Bearing	Tapered Roller Bearing	Hub Length	Approx Weight lbs.
			92A	90A						
8"	2"	1"	1500	1500	1/2"	UWR-0820-08	UWB-0820-08	UWT-0820-08	2-7/16"	10
					5/8"	UWR-0820-10				
					3/4"	UWR-0820-12	UWT-0820-12			
8"	3"	3/4"	3000	3000	3/4"	UWR-0830-12	UWB-0830-12	UWT-0830-12	3-1/2"	20
					1"	UWR-0830-16		UWT-0830-16		
					1"	UWR-0830-16-SI				
					1-1/4"	UWR-0830-20				
10"	3"	1"	3410	3410	3/4"	UWR-1030-12	UWB-1030-12	UWT-1030-12	3-1/2"	23
					1"	UWR-1030-16		UWT-1030-16		
					1"	UWR-1030-16-SI				
					1-1/4"	UWR-1030-20		UWT-1030-20		
12"	3"	1"	4100	4100	3/4"	UWR-1230-12	UWB-1230-12	UWT-1230-12	3-1/2"	31
					1"	UWR-1230-16	UWB-1230-16	UWT-1230-16		
					1"	UWR-1230-16-SI				
					1-1/4"	UWR-1230-20		UWT-1230-20		

Solid Urethane Wheels

SPECIFICATIONS								
Wheel Diameter	Wheel Width	Capacity lbs.	Axle Diameter	Straight Roller Bearing	Ball Bearing	Plain, Oilite, Celcon Bearing	Hub Length	Approx Weight lbs.
4"	1-1/2"	300	3/8"	MUR-0415-06	MUB-0415-06		1-5/8"	0.3
			1/2"	MUR-0415-08		MUC-0415-08		
			5/8"	MUR-0415-10		MUC-0415-10		
			3/4"	MUR-0415-12		MUC-0415-12		
4"	2"	700	1/2"		MUB-0420-08		2-3/16"	1.6
5"	1-1/2"	330	3/8"	MUR-0515-06		MUC-0515-06	1-5/8"	1.6
			1/2"	MUR-0515-08		MUC-0515-08		
			5/8"	MUR-0515-10		MUC-0515-10		
			3/4"	MUR-0515-12		MUC-0515-12		
5"	2"	1000	1/2"		MUB-0520-08		2-3/16"	1.7
6"	2"	1200	1/2"		MUB-0620-08		2-3/16"	1.8
6"	3"	2000	3/4"		MUB-0630-12		3-1/2"	5
			1"		MUB-0630-16			
8"	2"	1500	1/2"		MUB-0820-08		2-7/16"	2.9
8"	3"	2500	3/4"		MUB-0830-12		3-1/2"	7
			1"		MUB-0830-16			
10"	3"	3000	3/4"		MUB-1030-12		3-1/2"	10
			1"		MUB-1030-16			

UP TO 4,100 POUND CAPACITY